

Pc-Check® Windows® Diagnostic Software

Release, repair, repurpose, refurbish, replace...Relax

Finding it difficult to locate computer hardware failures, wasting costly service time – questioning test results – relax and shift the stress into your PC testing instead.

Pc-Check® Windows® computer diagnostics give you the stress testing you expect, but more to the point, they give you absolute knowledge of hardware conditions – results you can count on. Proven diagnostics, capable of assisting all sizes of companies and skill sets, loads of

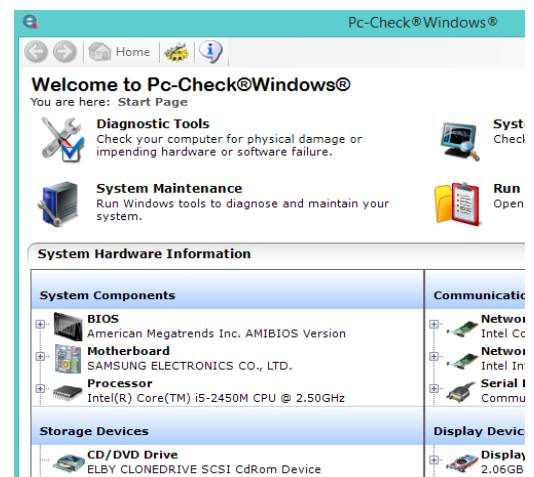
testing features and unlimited ways of using them.

Pc-Check Windows is the answer to solving your testing dilemmas – “do I release, repair, repurpose, refurbish or replace?”.



Pc-Check Windows has a testing advantage with Windows-based computers. Fully compatible with Windows 10 and UEFI hardware, boots WinPE, ensuring components from a PC and Mac® are reliably validated in the environment in which they are used. Enhance your service reliability and computer quality, decrease technical support telephone calls, and improve customer satisfaction and confidence.

Pc-Check Windows finds the hardware faults that other tests can't reveal.



Powerful, easy tests in Microsoft® Windows®

Test UEFI enabled hardware

Full scripting capabilities for all tests

System Stress Test, Burn-in,
Duration, Number of passes

**Remotely test PCs through Windows Desktop
Connection**

Create, and test from self-booting WinPE media

**Unattended testing, launch scripts automatically,
upon startup, without user interaction**

**Major test groups included, unlimited scripting
capacity**

✓ *Test all Windows dependent hardware: webcams,
3D Graphics, wireless network devices, and more.*

✓ *Full UEFI testing on all the latest Windows® PCs.
No need to disable Secure Boot.*

✓ *Total control of your diagnostic process.
Reveal hard-to-find intermittent errors.*

✓ *Test PCs from the server or helpdesk. Ideal for
remote PC support.*

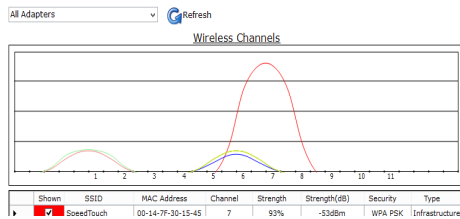
✓ *Test PCs, even Macs before you install the
operating system.*

✓ *Test PCs without users involved, no mistakes in
tests deployed, consistent, repeatable results.*

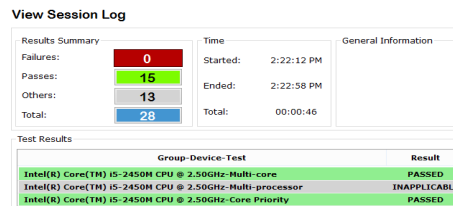
✓ *Thoroughly validate the PC products and services
you sell, support and service.*

Use Windows®-based tests to fully validated UEFI enabled components as well as non-UEFI hardware

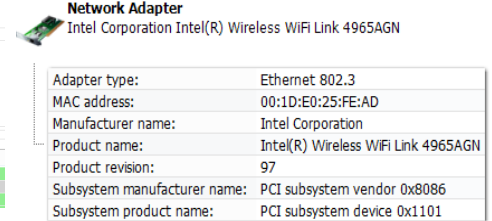
Wireless Network Access Point



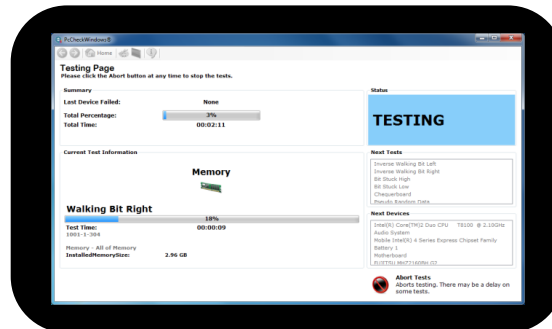
Session Log of Test Results



Comprehensive System Information



29 Test Groups
165+ Tests



Unlimited Scripting

Test PCs and Macs outside of Windows and Linux® with USB Booting WinPE

'WinPE Image Creator' application prepares custom, self-booting WinPE test media.

Use Windows Preinstallation Environment (WinPE) with Microsoft OEM license

Variable Media and Settings

Create .WIM, .ISO, and WinPE Bootable USB.

Utilize Microsoft ADK version 8.1 and 10.

Customize image settings for image type, region, and more.

Unlimited script and image builds.

Create and Automate Test Tools

Create different diagnostic test routines for manufacture, refurbishing, service and support.

Fully networkable, allows deployable and remote testing sessions.*

Network drive logging for connectivity and distribution of test result files.



Maximize profits by reducing hardware return costs

- Reduce asset identification, assembly, upgrade, and repair test workloads.
- Reduce returns and repairs.
- Reduce support calls.
- Increase profitability by improving PC reliability during system manufacturing integration, upgrading and servicing.

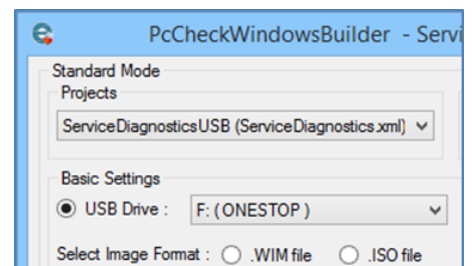


Control and contain errors

- Reveal hard-to-find intermittent errors.
- Log faults and unreliable computers.
- Deploy tests, operations wide, for maximum consistency.

Increase throughput by reducing human errors

- Standardized test scripts control unauthorised users and test usage.
- Remotely coach technical support with simple Pc-Check test script experience.



Microsoft Windows Support

- Windows Vista/ 7/8/8.1/10.
- Windows® Preinstallation Environment (**WinPE- 32bit and 64bit editions**) with Microsoft OEM license.
- Server 2003/2008(R2)/2012(R2) for remote deploy* and PC Builder license.
- UEFI enabled hardware.
- Standalone, bundle, deployable diagnostics.

*Site License required.

Diagnostic coverage for all major hardware groups in Microsoft Windows and Microsoft Windows Preinstallation Environment (WinPE).

General

- Hard drives up to 16 Exabyte
- AMD, Intel and compatible CPUs...both 32-bit and 64-bit.
- Test as much memory as Windows can recognize.

Supported Operating Systems

- Windows XP SP3
- Windows Server 2003 & R2
- Windows Vista
- Windows Server 2008 & R2
- Windows 7
- Windows 8
- Windows Server 2012 & R2
- Windows 8.1
- Windows 10
- WinPE

Pc-Check® Windows® Package

- Program CDROM
 - Convenient download updates
 - Comprehensive user e-manual
 - USB Preferred Port Plug (1)
 - Loop-back Plugs (2 Serial)
 - Audio Test Cable - 3-way (1)
 - DVD Test Disk (1)
 - CDROM Test Disk (1)
 - One-year Free Upgrade Subscription
 - Free Technical Support
 - Extra Test Accessories and Multiple System Testing
- License options available
(*contact Eurosoft for details*).

Minimum System Requirements

- IBM® PC compatible / Intel® 8086 architecture running the following applications:
- Operating systems: Microsoft Windows Vista/ Windows 7/8/8.1, and Windows 10
 - Microsoft Windows Server 2003/2003 R2/ 2008/2008 R2/ 2012/2012 R2
 - Supports Microsoft® Windows Preinstallation Environment (WinPE) (*please contact Eurosoft for details*).
 - Adobe® Acrobat® or similar PDF reader to read the manuals.

Parallel Ports

Data Port
External Loop-back
Status Register

Memory

Quick
Pseudo Random Data
Walking Bit Left
Walking Bit Right
Inverse Walking Bit Left
Inverse Walking Bit Right
Chequerboard
Bit Stuck High
Bit Stuck Low
Pseudo Random Address
Micro-topology

Gyroscope

[Quick Status](#)
[Core Recognition](#)
[Simple Roll Test](#)
[Gyroscope Roll](#)

Accelerometer

[Core Recognition](#)
[Quick Status](#)
[Acceleration](#)

Location

[Core Recognition](#)
[Quick Status](#)
[Location](#)

Network

Configuration
IPv4 Connection
[Wireless Strength](#)
[Wireless Connection](#)
System Connected
Loopback Signal**

Hard Drives

Butterfly Seek
Random Read
Linear Read
S.M.A.R.T. Failure
S.M.A.R.T. Short
S.M.A.R.T. Conveyance
S.M.A.R.T. Extended
Hard Drive Temperature

NVMe Drive

Linear Read
Random Read
S.M.A.R.T. Failure

USB

Detected Devices
Connectivity Test

Floppy Drives

Butterfly Seek
Linear Read
Read Write
Media Change
Write Protect

Monitor

Red Purity
Green Purity
Blue Purity
Mesh
Inverse Mesh
White MEME
Green MEME
Tonality Grid
LCD Dead Pixel

FireWire

IEEE 1394

Serial Ports

Configuration Registers
Quick Loop-back
Baud Rates
Sustained Loop-back
Priority Transmit

Removable Media

Linear Read
Random Read
Connectivity

System

Stress
[Sleep](#)
[Hibernate](#)

Processor

Core Instruction Set
Floating Point Instruction Set
MMX Instruction Set
SSE Instruction Set
SSE2 Instruction Set
SSE3 Instruction Set
SSE 4.1 Instruction Set
Cache Functionality
SSE 4.2 Instruction Set
SSE 4A Instruction Set
Multi-core
Multi-processor
Core Priority
Thermal Stress
Power Stress
CPU Fan Test
CPU Temperature

Audio

Audio Connection
[Loop-back Count](#)
[Advanced Quality](#)
[Quick Microphone](#)
[Quick System Sound](#)

Display Adapter

[Linear Memory](#)
[Micro-topology Memory](#)
[Chaotic Addressing Memory](#)
[Hardware Acceleration](#)
Graphics Card Temperature

Video Capture

Capture Driver
[Composite Capture Driver](#)
[S-Video Capture Driver](#)
[TV Capture Driver](#)
[RGB Capture Driver](#)
[Capture](#)
[Composite Capture](#)
[S-Video Capture](#)
[TV Capture](#)
[RGB Capture](#)
[Camera Interactive](#)

Battery

Voltage
Performance
Quick State
Core Recognition
Advanced State
Charge Level
Charge Life

Optical

Linear Read
Random Read
Advanced Movement
Media Erase
Directory Write
ISO Image Write
Media Eject

Biometric

[Core Recognition](#)

Motherboard

North-bridge
South-bridge
CMOS Clock
CMOS Checksum
CMOS Battery
System Fan
Voltage Core Detection
System Temperature

Operating System License

Windows 10 Support
Event Log
Kernel Response
Driver
Signed Driver
OS Requirements
Security Support

Hardware Monitor

System Temperature
CPU Temperature
CPU Fan
System Fan
Voltage Core Detection
Test
Drive Temperature
Graphics Card Temperature

Solid State Drives

Linear Read
S.M.A.R.T. Failure
S.M.A.R.T. Short
S.M.A.R.T. Conveyance
S.M.A.R.T. Extended

RAID

Linear Read

Touch Screen

Quick Grid
Advanced Line
Pointing Accuracy

Input Peripherals

Keyboard
Keyboard LED
Quick Mouse
Mouse Button
Movement
Quick Keyboard

Compass

[Core Recognition](#)
[Quick Status](#)
[Direction](#)

Ambient Light

[Core Recognition](#)
[Quick Status](#)
[Ambient Light Level](#)

Tests that are **listed in blue** are not compatible with Microsoft Windows Preinstallation Environment (WinPE).

Notes:

The following test groups or tests require full Windows environment.

Video | Biometric Devices | Capture Card* | Network Interface tests for wireless network interfaces

System Sleep Test | System Hibernate Test | Battery Voltage Test

*Generic Capture Driver Test available in Microsoft Windows Preinstallation Environment (WinPE).

**Network loopback test requires network cable (not supplied).

Eurosoft test accessories required for peripheral ports and media trays: USB, parallel/serial, audio, DVD/CDROM.

UEFI testing capability on 64Bit enabled hardware, not under UEFI environment.

Mac® Boot Camp® drivers required within WinPE (all tests non-native, Intel Architecture only).

Also consider adding Eurosoft [Pc-Check® Self-Booting Diagnostic Software](#) for testing outside the operating system.

Improve production or refurbishment test processes by adding [PC Builder™](#) for full factory automation.

Who Uses Pc-Check® Windows®?

Solutions for an ever changing landscape...

Computer manufacturing and repair still rely on diagnostics as standard practice. Services and support are blending with field technicians, backing MSP's who remotely manage all varieties of computers. The critical assessment of systems situated within public placements: government, military and education as well as private verticals is daunting. Refurbishing has taken off to repurpose computers from all these areas of computer use, extracting re-workable components to balance a broad eco-system. **Pc-Check Windows takes on this wider testing landscape with an entire new set of tools and applications. The end result: components are reliably tested and validated in the environment in which they are used. A Windows comfort zone — all kinds of devices explored — reliable hardware tests you can count on.**

Manufacturing

OEM/ODM
System Builders
Assemblers
System Integrators

Manufacturers of all sizes, those who build fresh and new, use Pc-Check® Windows® to reliably validate new hardware and system configurations prior to investing time in loading an operating system while also verifying PCs in the customer's installed Windows® environment.

Refurbishing

Microsoft Authorised Refurbishers
Remanufacturers
Rentals
Recyclers

Refurbishers, those who are eco-committed, re-manufacturing and repurposing PCs, use Pc-Check® Windows® to quickly and reliably validate inbound hardware assets to determine suitability for reuse, before upgrading, re-imaging and hard drive data erasing.

Services

Break-Fix Operations
Field Technicians
Computer Shops
Consultants

Servicing has a wide commitment, bringing consumers and industry closer to the repair process. Pc-Check® Windows® brings portable testing to the PC with USB media options and multiple script creation, reaching a variety of PCs and diverse customer needs.

Support

Network Administrators
I.T. Professionals
Managed Service Provider
Help Desk

Support can involve deployment and online technical sessions. Preventative maintenance processes as well as rapid diagnosis for disaster recovery is required. Pc-Check® Windows® gives a fast and flexible approach to assessing hardware issues at the start and end point of a support session.

Flexible user and licensing options to perfectly fit your costs and needs.

Pc-Check® Windows® offers diagnostic and test management solutions as a standalone package, bundled, remote and site licenses. Fully supported and maintained for a range of Microsoft Windows and Server applications. Whether you are running 1 or 100+ stations, flexible, unattended testing gives you maximum control over your entire operation.

Contact us at the locations below to take advantage of a new testing experience today.

Eurosoft (UK) Ltd
3 St. Stephen's Road,
Bournemouth,
Dorset, BH2 6JL
United Kingdom

www.eurosoft-uk.com
Tel: +44 (0)1202 297315
Fax: +44 (0)1202 558280

Eurosoft (US) Inc
706 Jackson Street
Sioux City, Iowa, 51105
USA

www.eurosoft-us.com
Tel: +1 (712) 255 7483
Fax: +1 (866) 615 9384



© Eurosoft (UK) Ltd. 1988-2017. Pc-Check is a registered trademarks of Eurosoft (UK) Ltd. Boot2Test, PC Builder, Pc-Check Windows, QA+WIn32, QA+WIn, QA+FE Service Center, ZeroData, Virtual QA+, Virtual Pc-Check, Amberstone, USB Preferred Port Plug, CDT, DVDIT, EuroDOS are trademarks of Eurosoft (UK) Ltd. All other product trademarks are recognised as belonging to their respective owners. 230617